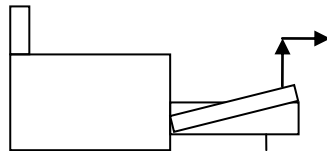
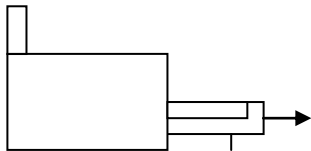
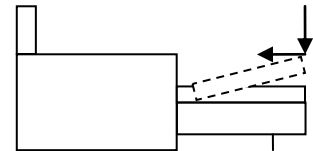


Bedienung Schlafsofa Monara

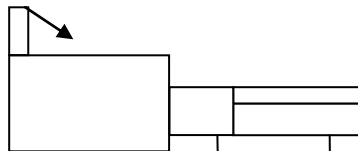
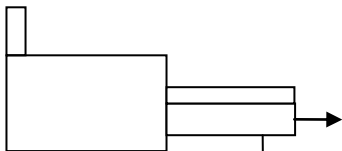
Sitzposition



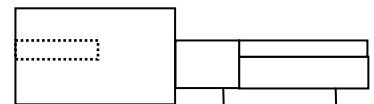
Relaxposition



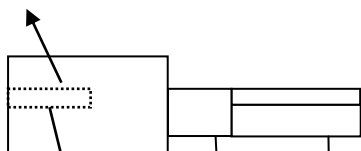
Relaxposition



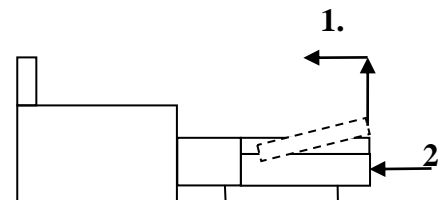
Schlafposition



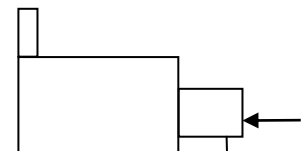
Schlafposition



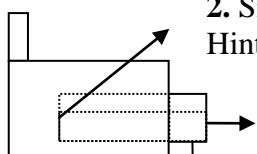
Seitliche Griffmulde im Kopfteil



Sitzposition

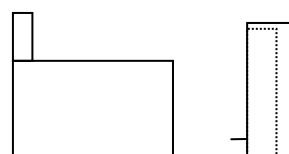


zum Vertragen



2. Sitzelement an der Hinterseite anheben

1. nur ca. 1/3 herausziehen



Das Sofa steht auf dem Bettkasten, die Armlehnen dürfen den Boden nicht berühren!